



Lisa M. Letourneau MD, MPH
Quality Counts

PCPCC
April 2010

Objectives

- Describe Maine PCMH Pilot
- Highlight HIT aspects & support for Maine Pilot



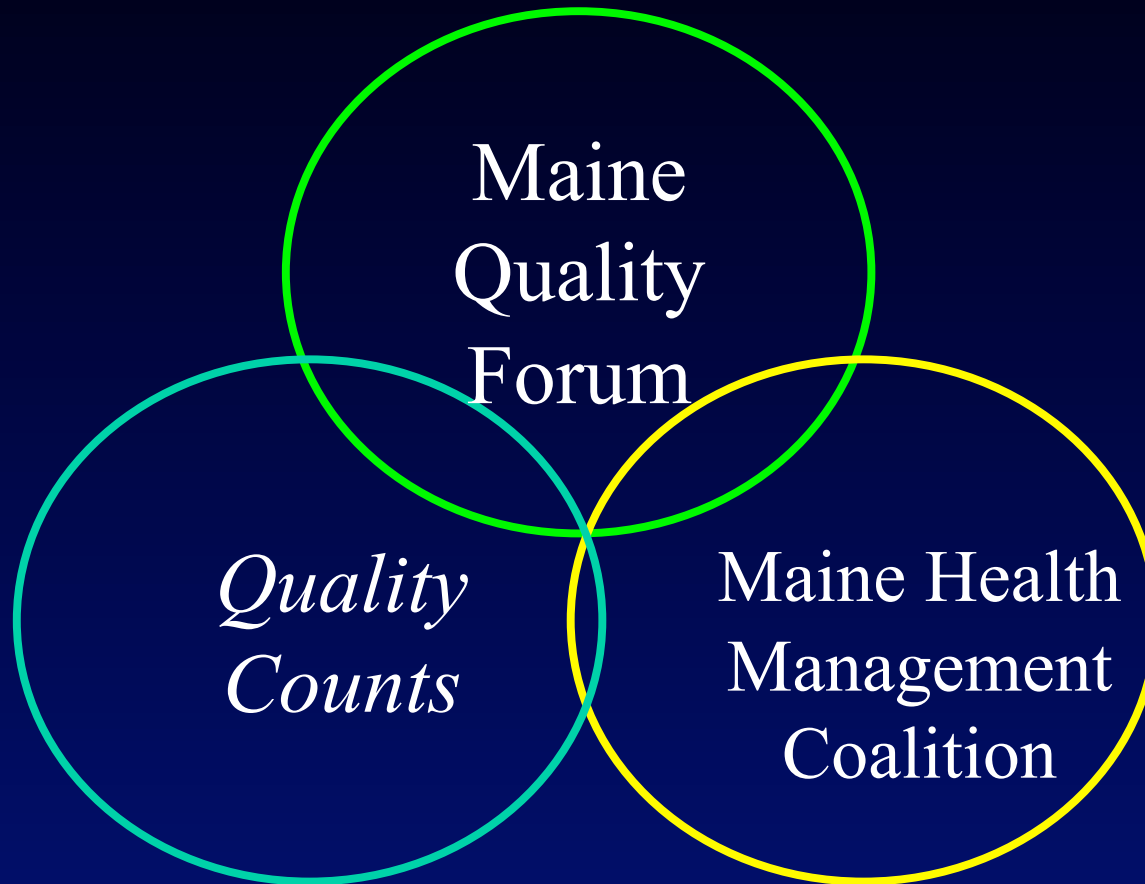
Maine PCMH Pilot

Key elements:

- 3-year multi-payer PCMH pilot
- Collaborative effort of key stakeholders, all major payers
- Adopted common mission & vision, guiding principles for Maine PCMH model
- Selected 22 adult / 4 pedi PCP practices across state
- Supporting practice transformation & shared learnings beyond pilot practices
- Committed to engaging consumers/ patients at all levels
- Planning rigorous outcomes evaluation (clinical, cost, patient experience of care)



Maine PCMH Pilot Leadership



Maine PCMH Pilot - Timeline

- Jan 2009: Call for practice applications
- May 2009: Practices notified – start of 6mo “ramp-up period”
- Sept: All practices completed NCQA PPC-PCMH applications
- Sept-Dec: practices contract with payers
- Jan 2010: Start date for PCMH payments
- 2010- 2012: 3-year PCMH Pilot

▪ ▪ ▪ ▪ ▪ ▪ ▪ ▪ ▪ ▪ ▪ ▪ ▪ ▪ ▪ ▪

Maine PCMH Pilot

Practice “Core Expectations”

1. Demonstrated physician leadership
 2. Team-based approach
 3. Population risk-stratification and management
 4. Practice-integrated care management
 5. Same-day access
 6. Behavioral-physical health integration
 7. Inclusion of patients & families
 8. Connection to community / local HMP
 9. Commitment to waste reduction
 10. Patient-centered HIT
- ▪ ▪ ▪ ▪ ▪ ▪ ▪ ▪ ▪ ▪ ▪ ▪ ▪ ▪ ▪

Maine PCMH Pilot: HIT Expectations

- Required:
 - PCMH Level 1 or higher (= registry functionality)
 - Ability to report on 30 clinical quality measures (chronic disease + prevention)
 - Willingness to incorporate more pt-centered HIT systems over 3-year Pilot
- Highly desirable:
 - EMR (21/26)
 - Interconnected EMR (HealthInfoNet – HIE)
 - PHR (3/26)

Support for Practice Transformation

- PCMH Learning Collaborative
 - IHI “BTS” model; 3 Learning Sessions/yr
- Practice QI Coaches
 - Most from existing PHOs, med groups
 - Using microsystems approach to QI
- Technical assistance “experts”
 - HIT, BH integration, work with consumers
- Ongoing feedback reports
 - Clinical, claims data

Maine PCMH Pilot: HIT Support

- Baseline HIT assessment, recommendations for HIT enhancements
- QI Coaches, technical assistance
- Coming soon...
 - REC
 - ARRA stimulus fund
 - Increasing attention on “meaningful use” → meaningful improvement

www.mainequalitycounts.org

Quality Counts

A- A+ MEMBER LOGIN

[Home](#) [Conferences & Trainings](#) [Tools and Toolkits](#) [Contact](#)

- QC Learning Community - Ambulatory Care
- Patient Centered Medical Home
 - PCMH Support for Practice Transformation
 - Assessing Practice Readiness
 - Payment Model & Financial Case for PCMH
- QC Learning Community - Hospital Care
- Aligning Forces for Quality (AF4Q)
- Consumer/Patient Tools: Quality Counts for ME
- About QC
- Join/Support Quality Counts
- Members Only
- Additional Resources
- Calendar & Events



Measurably Improving Health & Healthcare in Maine

Patient Centered Medical Home

PDF | Print | Email



MAINE
Patient Centered
Medical Home Pilot

The Maine Patient Centered Medical Home (PCMH) Pilot is an effort to bring better primary care services to Maine. The Maine PCMH Pilot is outlined by its mission, vision, and guiding principles that build off of national principles for the medical home model, such as the AAP-AAFP-ACP-AGA Joint Principles, and also reflect the needs of Maine people and providers. The Maine pilot currently includes 26 primary care practices working together over a 3-year period. Participating practices commit to achieving national recognition standards for medical home, and work to meet a set of 10 "Core Expectations" to continue their efforts to move towards a more patient-centered model of care.

The Maine PCMH Pilot is led by the Dirigo Health Agency's Maine Quality Forum, Quality Counts, and the Maine Health Management Coalition. It is governed by the PCMH Working Group that includes consumers, providers, payers, employers, and public health advocates from around the state. Other key stakeholder supporting the Maine PCMH Pilot include the Maine Medical Association, Maine Osteopathic Association, and Maine Chapters of the AAP, AAFP, and ACP.

Funding for Pilot is supported primarily by the Maine Quality Forum and the Maine Health Access Foundation, with additional support from Harvard Pilgrim Health Care, Quality Counts, the Maine Health Management Coalition, Martins Point Health Care, and Anthem BCBS.

Sign Up for E-News

Contact Info / Questions

➤ Lisa Letourneau MD, MPH

- Letourneau.lisa@gmail.com
- 207.415.4043

➤ Sue Butts Dion

- sbutts@maine.rr.com

➤ Maine PCMH Pilot

- www.mainequalitycounts.org

(See “Resource Library” & “News” sections)

➤ Additional info on PCMH model, pilots

- www.pcpcc.net

